



LIGHTING

TECHNICAL LED LIGHTS FOR INDUSTRY

Workplace lights | Machine lights | UV lights

General catalog 2022



Let the spark of the skip enthusiasm

Our path is more than just a vision. We at Pfeifer and Seibel consider ourselves to be a reliable, efficient partner for industry, ensuring the long-term success of its customers and the company, with innovative and economical lighting solutions. Our experts continuously work on new developments and design solutions for ergonomic, efficient industrial lighting based on these, which are oriented towards the needs of the customer. Anyone who chooses products from Pfeifer and Seibel is choosing quality and service. We have set ourselves clear standards, which you can always rely on:

- ➔ We consistently orient ourselves towards customer and market needs
- ➔ We offer outstanding services with a high level of potential benefit for our customers
- ➔ Our products boast a fair price-performance ratio and excellent quality
- ➔ Our customers must be able to trust in our products and services at all times

Explanations

230 V
AC

Direct connection to 230 V AC

24 V
DC

Direct connection to 24 V DC



Cable length in meters

IP67

IP protection class



Protection class III



Protection class I

M12

LED lights with M12 connector

-10°C
...
+30°C

Temperature range

CRI
RA>85

Color rendering index



LED lights with RGB LEDs



LED lights with RGBW LEDs



INDUSTRY

Pfeifer und Seibel GmbH

Maurerstraße 15
35236 Breidenbach
Germany

Fon: +49(0) 6465 - 92 71 0
Fax: +49(0) 6465 - 92 71 500

sales@ps-industry.com
www.ps-industry.com



LIGHTING

is a brand of

Content directories

Workplace lighting

Page 6 - 17

PS WorkLED SE - Rotatable.....	12
PS WorkLED SE - Fixed	13
PS WorkLED SE - Lateral.....	14
PS WorkLED SE - Duo.....	16
PS WorkLED SE - HCL.....	16
PS FlexLED - LED Articulated-arm luminaire	-17

Machine lighting

Page 18 - 31

PS MultiLED - IP54.....	24
PS MultiLED - RGB Signal luminaire.....	25
PS MultiLED - IP20.....	26
PS TubeLED - LED Tube luminaire.....	27
PS ProtectLED - IP67 LED Tube luminaire..	29
PS ProtectLED - IP67 RGB Signal luminaire..	30

UV Light for Industry

Page 32 - 35

Customized LED special solutions

Page 36-38

Light for workplaces in industry

For workplaces, DIN EN 12464-1 differentiates between the task area and the immediate surrounding area. The choice of lighting systems that are used substantially depends on the height of the room and the task area at the workplace.

The concentration of the lighting on the task area can even reduce investment and energy costs, however there are associated risks relating to the quality of the lighting. For example, this is always the case if the task area and the surrounding environment with less lighting are so close together that the light density distribution in the task area is not balanced. The task areas must therefore be defined carefully.

If additional light is required at individual workstations, workplace lights can be used. Increased lighting intensities when working with small parts or carrying out inspections are rarely achieved with room lighting, but almost always with additional workplace lights. Their light only illuminates the task area.



| PS WorkLED SE

Lots of power Lots of advantages

Comprehensive lighting expertise from Pfeifer and Seibel and continuous research form the basis for our extremely efficient lighting solutions for workplaces in industry.

All lights in the PS WorkLED SE family are precisely tailored to suit the demanding task areas at workplaces in industry. With their high light intensity, which is for each light considerably above the values required in the relevant standards, the PS WorkLED SE represents an elevated level of performance.

The standard option to dim all the PS WorkLED SE lights, as well as the rotation function on the rotatable version, ensures that the lights can be adjusted individually to suit the employees. This results in perfect lighting for all employees when using workstations. The cover on the lights boasts outstanding transparency and brilliance, and ensures perfect light distribution – this ensures homogeneous illumination of the workstation and avoids unwanted shadows.

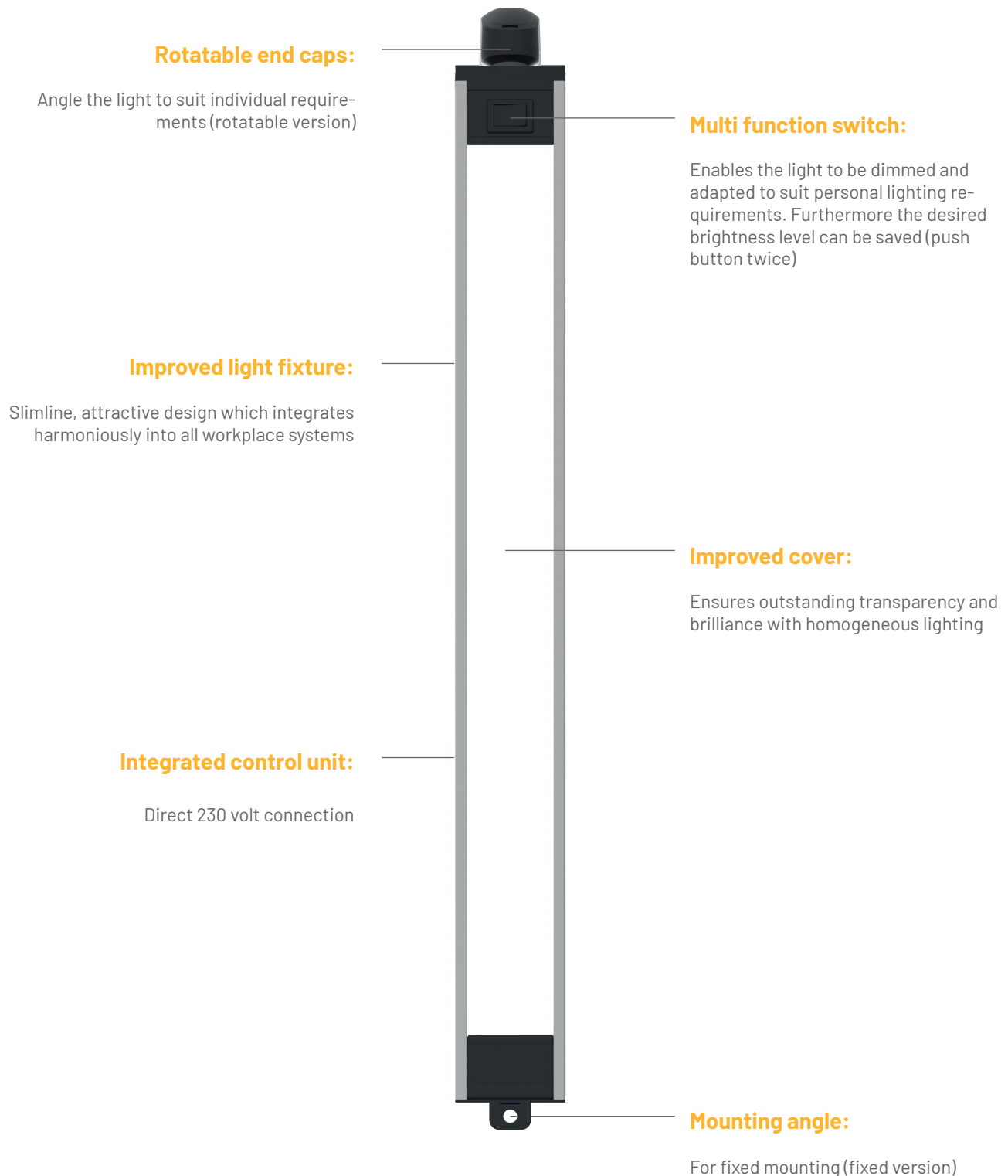
Light intensity:

States how much light falls on an area of one square meter, measured in LUX (lx). $E_{max}@1m = 100 \text{ lx}$ means that at a distance of a meter away from the light, 100 lumens of light falls on an area of one square meter.

Color temperature:

States in the unit Kelvin (K) whether the light source emits a warm white or cold white light. Warm white light is under 3300 K (e.g. 60 W filament bulb: 2700 K), cold white light over 5000 K (e.g. sunlight). In between these, the light is known as natural light.

An overview of the PS WorkLED SE



Color rendering index (Ra):

Shows how accurately the light renders colors, (perfect color rendering: Ra=100). Filament bulbs achieve approximately 100, energy saving bulbs 50-90 and LEDs up to 97. In the EU, interior lighting must have a color rendering index of at least 80.

UGR:

The Unified Glare Rating is a standardized process with which the glare of lights is evaluated around the world. There are legal upper limits for glare for different applications, so for office workstations the UGR must be a maximum of 19.

| PS WorkLED SE

Guarantees you can always rely on

The mounting options for the PS WorkLED lights are compatible with the established system profiles and with all other surfaces. A variety of standardized lengths of lights and numerous connection options, offer even greater flexibility when integrating into assembly workstations.

The fixed versions of the PS WorkLED SE can also optionally be equipped with a built in M12 connector and offer the possibility to operate the lights at 24 Volts. The lights can also be connected using feed-through wiring.

Every year electrostatic discharges cause enormous damage, particularly in electronics manufacturing. All PS WorkLED SE lights are therefore also available in versions with ESD protection.



PS WorkLED SE - Rotatable

230 V
AC



IP30

4m

-10°C
...
+30°C

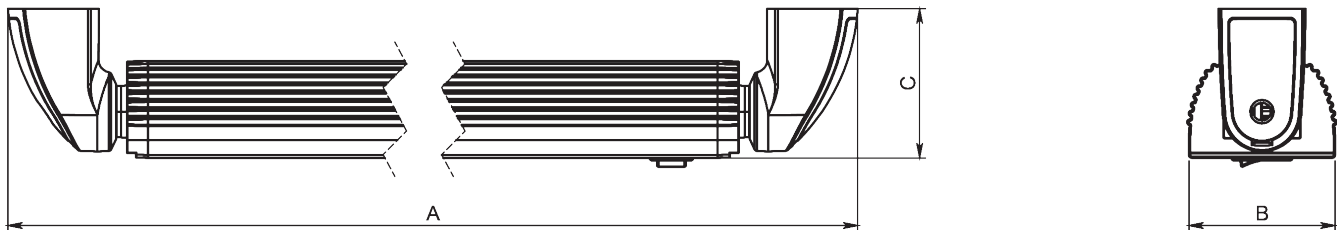
Product features:



- Different lengths
- With LEDs in neutral white (4,000 K) light color and very good color rendering (RA> 80)
- Cold white (5,700 K) on request
- Long service life of 50,000 hours
- Slim and space-saving design
- Luminaire housing made of anodised aluminum

Highlights:

- Direct connection to 230V through integrated operating device
- Multifunction button for setting the light requirement and to save the desired brightness
- Rotatable luminaire to direct the light



Variants overview: PS WorkLED SE - rotatable

Description:	Item number:	Length:			Power:	Luminous flux:	Illumination:
PS WorkLED SE - Rotatable 1040	1029.000.001	A = 536 mm	B = 51 mm	C = 51 mm	13 W	1326 lm	557 lx @ 1 m
PS WorkLED SE - Rotatable 3040	1029.000.002	A = 661 mm	B = 51 mm	C = 51 mm	21 W	2142 lm	903 lx @ 1 m
PS WorkLED SE - Rotatable 4040	1029.000.003	A = 976 mm	B = 51 mm	C = 51 mm	32 W	3360 lm	1409 lx @ 1 m
PS WorkLED SE - Rotatable 5040	1029.000.004	A = 1171 mm	B = 51 mm	C = 51 mm	40 W	4400 lm	1841 lx @ 1 m

Variants overview: PS WorkLED SE - rotatable with protection against ESD

Description:	Item number:	Length:			Power:	Luminous flux:	Illumination:
PS WorkLED SE - Rotatable 1040 ESD	1029.000.081	A = 536 mm	B = 51 mm	C = 51 mm	13 W	949 lm	531 lx @ 1 m
PS WorkLED SE - Rotatable 3040 ESD	1029.000.082	A = 661 mm	B = 51 mm	C = 51 mm	21 W	1533 lm	861 lx @ 1 m
PS WorkLED SE - Rotatable 4040 ESD	1029.000.083	A = 976 mm	B = 51 mm	C = 51 mm	32 W	2464 lm	1345 lx @ 1 m
PS WorkLED SE - Rotatable 5040 ESD	1029.000.084	A = 1171 mm	B = 51 mm	C = 51 mm	40 W	3160 lm	1756 lx @ 1 m

PS WorkLED SE - AC Rotatable

230 V
AC



IP30

4m

-10°C
...
+30°C

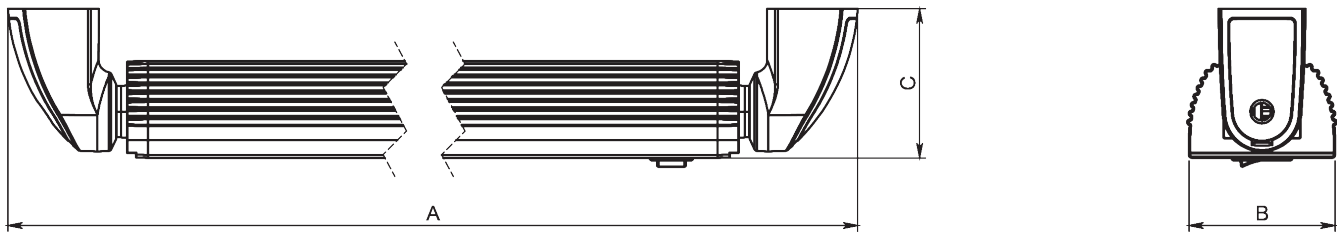
Product features:



- Different lengths
- With LEDs in neutral white (4,000 K) light color and very good color rendering (RA> 80)
- Cold white (5,700 K) on request
- Long service life of 100,000 hours
- Slim and space-saving design
- Luminaire housing made of anodised aluminum

Highlights:

- High voltage LED technology*
- No operating device necessary
- Connection to 230 V without operating device
- Rotatable luminaire to direct the light



Variants overview: PS WorkLED SE - AC rotatable

Description:	Item number:	Length:			Power:	Luminous flux:	Illumination:
PS WorkLED SE - AC Rotatable 1240	1029.000.071	A = 730 mm	B = 51 mm	C = 51 mm	14 W	1526 lm	605 lx @ 1 m
PS WorkLED SE - AC Rotatable 2540	1029.000.072	A = 1275 mm	B = 51 mm	C = 51 mm	26 W	2834 lm	1151 lx @ 1 m

Variants overview: PS WorkLED SE - AC rotatable with protection against ESDainst ESD

Description:	Item number:	Length:			Power:	Luminous flux:	Illumination:
PS WorkLED SE - AC Rotatable 1240 ESD	1029.000.073	A = 730 mm	B = 51 mm	C = 51 mm	14 W	1092 lm	590 lx @ 1 m
PS WorkLED SE - AC Rotatable 2540 ESD	1029.000.074	A = 1275 mm	B = 51 mm	C = 51 mm	26 W	2028 lm	1123 lx @ 1 m

*Please note: These luminaires should not be used in rooms with rotating equipment, since the light modulation could cause stroboscopic effects. The light modulation can have an impact on the perception of moving or rotating instruments. Therefore, do not use the luminaires on critical applications such as in a turning shop. Furthermore, these luminaires can cause interferences on screens or cameras and on monochrome LCDs.

PS WorkLED SE - Fixed



230 Volt Varianten



24 Volt Varianten

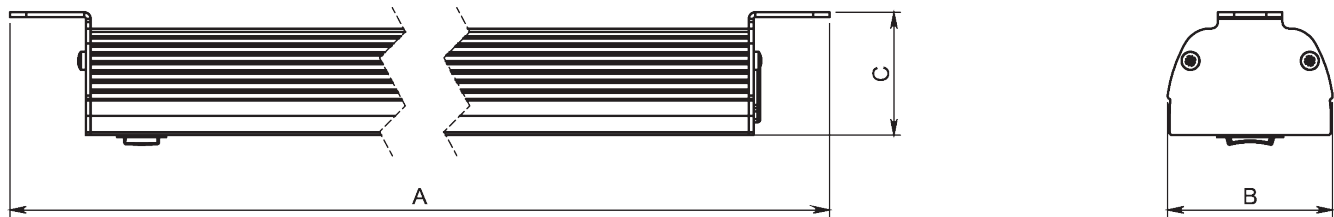


Product features:

- ➔ Different lengths
- ➔ With LEDs in neutral white (4,000 K) light color and very good color rendering (RA> 80)
- ➔ Cold white (5,700 K) on request
- ➔ Long service life of 50,000 hours
- ➔ Slim and space-saving design
- ➔ Luminaire housing made of anodised aluminum

Highlights:

- ➔ Direct connection to 230V through integrated operating device
- ➔ Multifunction button for setting the light requirement and to save the desired brightness
- ➔ Through-wiring of up to 20 lights



Variants overview: PS WorkLED SE - fixed (230 V)

Description:	Item number:	Length:			Power:	Luminous flux:	Illumination:
PS WorkLED SE - Fixed 1040	1029.000.011	A = 501mm	B = 51 mm	C = 38 mm	13 W	1326 lm	557 lx
PS WorkLED SE - Fixed 3040	1029.000.012	A = 627 mm	B = 51 mm	C = 38 mm	21 W	2142 lm	903 lx
PS WorkLED SE - Fixed 4040	1029.000.013	A = 942 mm	B = 51 mm	C = 38 mm	32 W	3360 lm	1409 lx
PS WorkLED SE - Fixed 5040	1029.000.014	A = 1137 mm	B = 51 mm	C = 38 mm	40 W	4400 lm	1841 lx

Variants overview: PS WorkLED SE - fixed with protection against ESD (230 V)

Description:	Item number:	Length:			Power:	Luminous flux:	Illumination:
PS WorkLED SE - Fixed 1040 ESD	1029.000.111	A = 501mm	B = 51 mm	C = 38 mm	13 W	949 lm	531 lx
PS WorkLED SE - Fixed 3040 ESD	1029.000.112	A = 627 mm	B = 51 mm	C = 38 mm	21 W	1533 lm	861 lx
PS WorkLED SE - Fixed 4040 ESD	1029.000.113	A = 942 mm	B = 51 mm	C = 38 mm	32 W	2336 lm	1345 lx
PS WorkLED SE - Fixed 5040 ESD	1029.000.114	A = 1137 mm	B = 51 mm	C = 38 mm	40 W	2920 lm	1756 lx

Variants overview: PS WorkLED SE - fixed with through-wiring (230 V)

Description:	Item number:	Length:			Power:	Luminous flux:	Illumination:
PS WorkLED SE - Fixed 1040 WDV	1029.000.031	A = 501mm	B = 51 mm	C = 38 mm	13 W	1326 lm	557 lx
PS WorkLED SE - Fixed 3040 WDV	1029.000.032	A = 627 mm	B = 51 mm	C = 38 mm	21 W	2142 lm	903 lx
PS WorkLED SE - Fixed 4040 WDV	1029.000.033	A = 942 mm	B = 51 mm	C = 38 mm	32 W	3360 lm	1409 lx
PS WorkLED SE - Fixed 5040 WDV	1029.000.034	A = 1137 mm	B = 51 mm	C = 38 mm	40 W	4400 lm	1841 lx

Variants overview: PS WorkLED SE - fixed with M12 connector (24 V)

Description:	Item number:	Length:			Power:	Luminous flux:	Illumination:
PS WorkLED SE - Fixed 1040 M12	1029.000.021	A = 501mm	B = 51 mm	C = 38 mm	13 W	1014 lm	441 lx
PS WorkLED SE - Fixed 3040 M12	1029.000.022	A = 627 mm	B = 51 mm	C = 38 mm	27 W	2106 lm	882 lx
PS WorkLED SE - Fixed 4040 M12	1029.000.023	A = 942 mm	B = 51 mm	C = 38 mm	41 W	3198 lm	1323 lx
PS WorkLED SE - Fixed 5040 M12	1029.000.024	A = 1137 mm	B = 51 mm	C = 38 mm	52 W	4212 lm	1764 lx

PS WorkLED SE - Lateral



Product features:

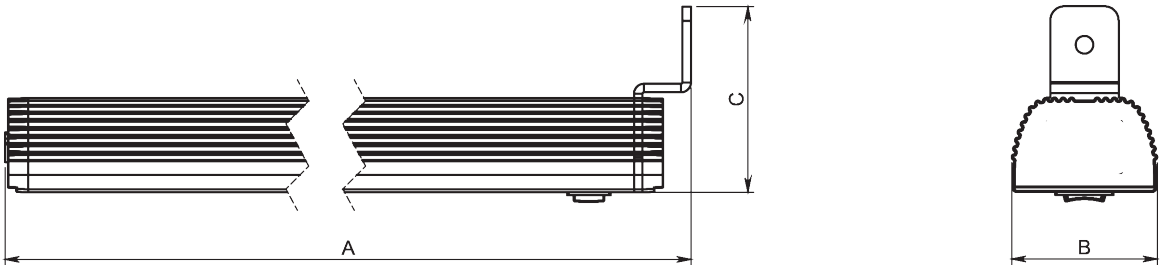
- Side mounted LED system luminaire
- With LEDs in neutral white (4,000 K) light color and very good color rendering (RA> 80)
- Cold white (5,700 K) on request
- Long service life of 50,000 hours
- Slim and space-saving design
- Luminaire housing made of anodised aluminum

Highlights:

- Direct connection to 230V through integrated operating device
- Multifunction button for setting the light requirement and to save the desired brightness
- Adjustable in height and position

Variants overview: PS WorkLED SE - Lateral

Description:	Item number:	Length:			Power:	Luminous flux:	Illumination:
PS WorkLED SE - Lateral 1040	1029.000.061	A = 465mm	B = 51 mm	C = 65 mm	13 W	1326 lm	557 lx @ 1 m
PS WorkLED SE - Lateral 1040 ESD	1029.000.062	A = 465 mm	B = 51 mm	C = 65 mm	13 W	949 lm	531 lx @ 1 m



PS WorkLED SE - AC Lateral



Product features:

- Side mounted LED system luminaire
- With LEDs in neutral white (4,000 K) light color
- Slim and space-saving design
- Luminaire housing made of anodised aluminum

Highlights:

- High voltage LED technology - direct connection to 230 V without operating device
- Adjustable in height and position

Description:	Item number:	Length:			Power:	Luminous flux:	Illumination:
PS WorkLED SE - Lateral 1040 AC*	1029.000.065	A = 337 mm	B = 51 mm	C = 65 mm	32 W	606 lm	255 lx @ 1 m

*Please note: These luminaires should not be used in rooms with rotating equipment, since the light modulation could cause stroboscopic effects. The light modulation can have an impact on the perception of moving or rotating instruments. Therefore, do not use the luminaires on critical applications such as in a turning shop. Furthermore, these luminaires can cause interferences on screens or cameras and on monochrome LCDs.

PS WorkLED SE - Duo

230 V
AC



IP30

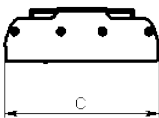
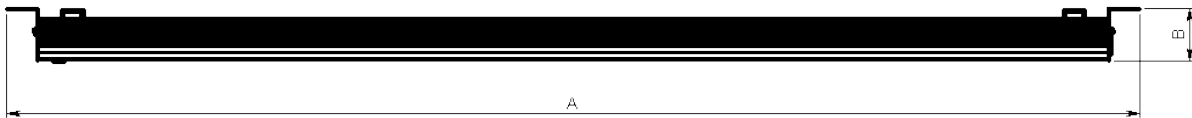
-10°C
...
+30°C

Product features:

- Two different lengths
- With LEDs in neutral white (4,000 K) light color and very good color rendering (RA> 80)
- Cold white (5,700 K) on request
- Long service life of 50,000 hours (L80 | B50)
- Luminaire housing made of anodised aluminum

Highlights:

- Direct connection to 230V through integrated operating device
- Multifunction button for setting the light requirement and to save the desired brightness
- Two-lamp luminaire for high illuminance and avoiding shadows



Variants overview: PS WorkLED SE - Duo

Description:	Item number:	Length:	Width:	Height:	Power:	Luminous flux:	Illumination:
PS WorkLED SE - Duo 3040	1029.000.204	A = 614mm	B = 121 mm	C = 42,5 mm	42 W	4518 lm	1847 lx @ 1 m
PS WorkLED SE - Duo 4040	1029.000.205	A = 900 mm	B = 121 mm	C = 42,5 mm	63 W	6968 lm	2848 lx @ 1 m

PS FlexLED - Surface

230 V
AC



IP30

1,8m


-10°C
...
+30°C

Product features:

- With LEDs in neutral white (4,000 K) light color and very good color rendering (RA> 80)
- Long service life of 50,000 hours (L80 | B50)
- Slim and space-saving design
- Easy installation via table clamp

Highlights:

- Direct connection to 230 V via power supply
- Multifunction button for adjusting the light requirement
- Adjustable in height and position



Variants overview: PS FlexLED Surface

Description:	Item number:	Length (Light):	Power:	Luminous flux:	Illumination:	Color temperature:
PS FlexLED 1740 SF	1036.000.001	A = 325,2 mm	17 W	1510 lm	2469 lx @ 0,5 m	4000 K
PS FlexLED 1757 SF	1036.000.002	A = 325,2 mm	17 W	1510 lm	2469 lx @ 0,5 m	5700 K

Light for machinery and equipment

If additional light is required when working on machinery – as well as at industrial workstations – additional lights must be used. Machinery lights are bolted, clamped or fixed magnetically at points intended for this purpose on the machinery.

The risk of workplace accidents is high on machinery and assembly lines. Here lighting must guarantee safety above all. Adequate light in the production facility is also important for precise work and therefore a crucial factor when it comes to quality. At the same time, lights and light sources in factories and workshops must in some cases be able to withstand heavy loads. This means robust lighting solutions are required.

The manufacturer must equip the machinery with appropriate lighting for the work operations if the lack of such lighting could result in a risk, despite standard room lighting. The manufacturer must make sure that there is neither a disruptive shaded area nor disruptive glare or any dangerous strobe effect, caused by the lighting supplied by the manufacturer.



| PS MultiLED

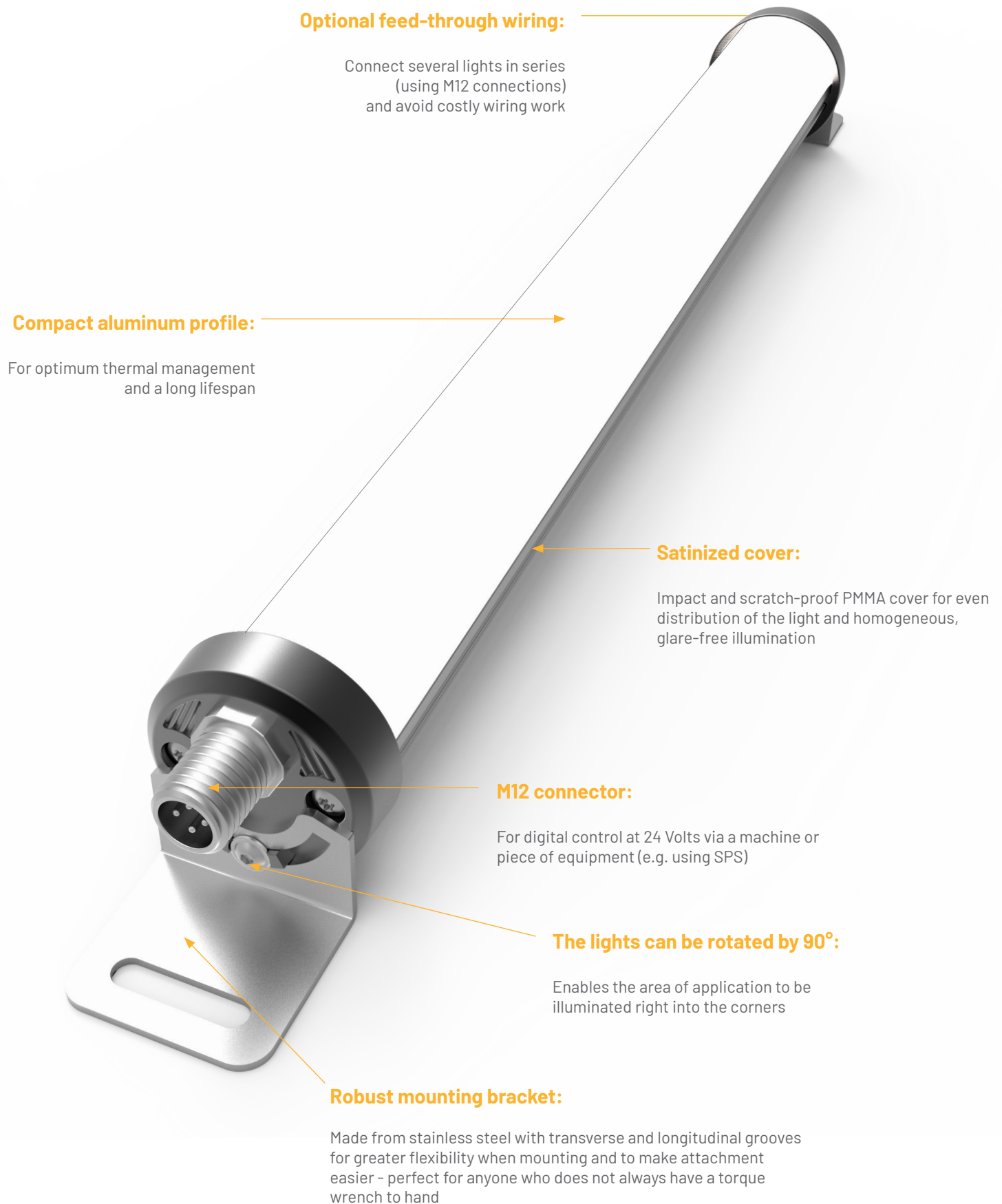
A light prepared for any task

Our PS MultiLED light, with its robust workmanship, provides first-class lighting. A high-performance light source is of great importance in industry and in the working environment.

The compact design of the PS MultiLED also enables the use of machinery and equipment in areas with limited space. The light is also protected from dust build up and water spray.

The particularly high lumen values of our PS MultiLED lights create a very bright light along the entire tube length, which makes visual perception on machinery and equipment significantly easier.

An overview of the PS MultiLED



IPS MultiLED

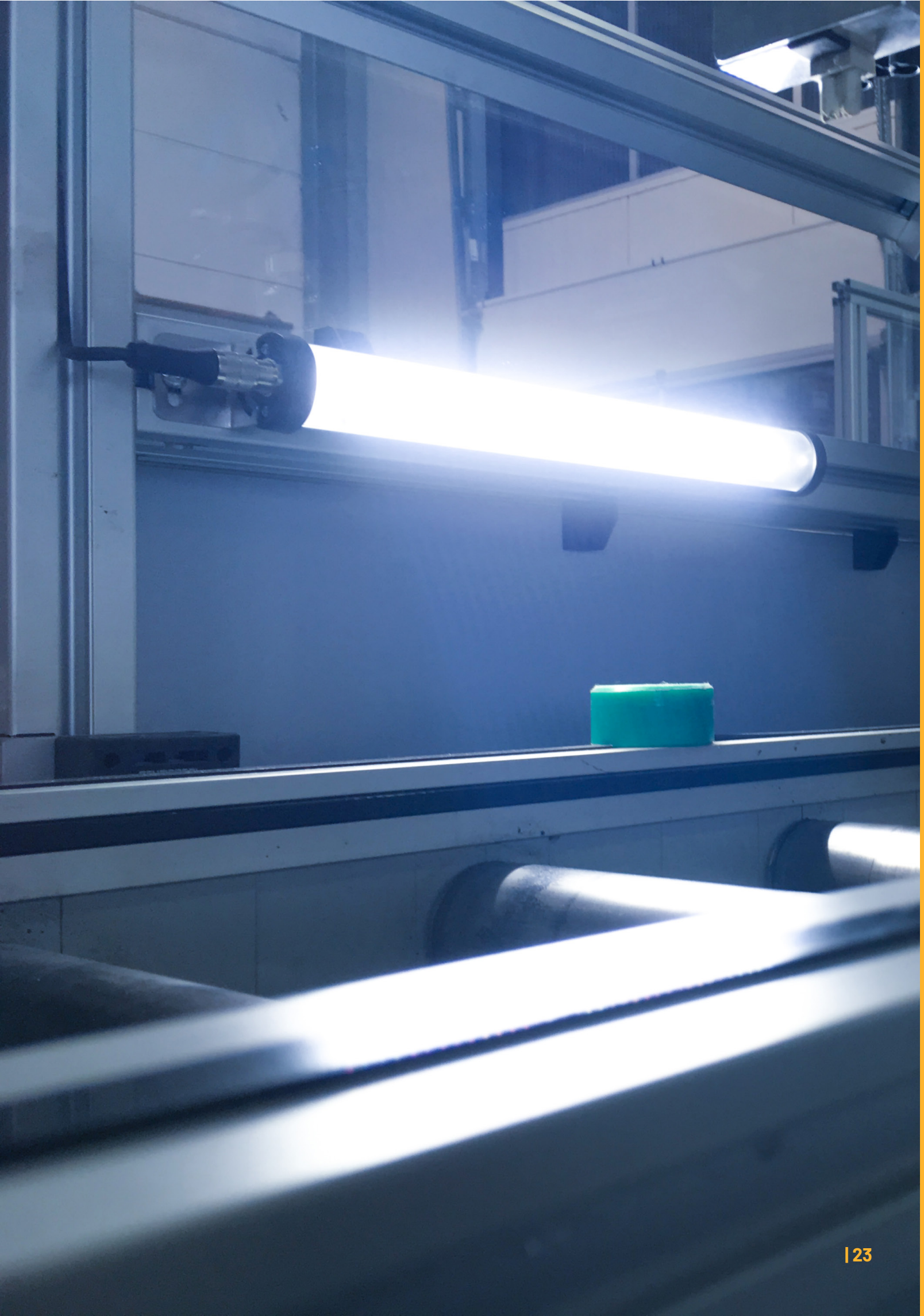
Top efficiency

The compact, heat-dissipating aluminum profile ensures optimum thermal management and a long lifespan. With a light efficiency of over 120 lm/W, all versions are available in a variety of lengths.

All versions ensure even light distribution and homogeneous, glare-free illumination. The cover (PMMA) is also particularly impact-resistant and is the most scratch-proof of all plastics.

The robust mounting bracket, made from stainless steel with transverse and longitudinal grooves for greater flexibility when mounting and to make attachment easier - perfect for anyone who does not always have a torque wrench to hand.

Several lights can be connected in series by means of the optional feed-through wiring, avoiding costly wiring work. The M12 connector allows digital control via a machine or piece of equipment.

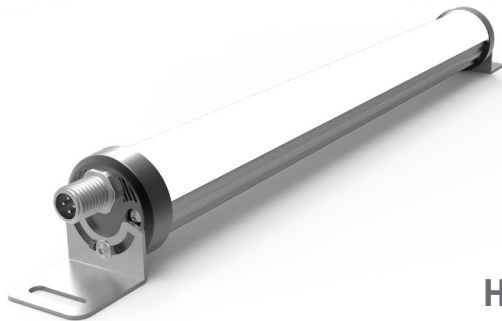


PS MultiLED - IP54



Product features:

- Different lengths
- With LEDs in cool white (5,700 K) light color and very good color rendering (RA> 80)
- Long service life of 60,000 hours
- M12 sensor connector for digital control at 24 Volts via a machine or piece of equipment (e.g. using SPS)
- Luminaire housing made of anodised aluminum



Highlights:

- With transverse and longitudinal grooves for greater flexibility to make attachment easier
- Robust mounting bracket made from stainless steel - no bursting when tightening the screws
- Through-wiring of several lights (Total current consumption of max. 4 amps)
- Rotatable luminaire to direct the light



Variants overview: PS MultiLED IP54 - with diffuse cover

Description:	Item number:	Length:			Power:	Luminous flux:	Illumination:
PS MultiLED 0857 mit weißer Abdeckung	1032.000.005	A = 372 mm	B = 38,5 mm	C = 40,5 mm	8 W	938 lm	283 lx @ 1m
PS MultiLED 1657 mit weißer Abdeckung	1032.000.006	A = 626 mm	B = 38,5 mm	C = 40,5 mm	16 W	1876 lm	566 lx @ 1m
PS MultiLED 2457 mit weißer Abdeckung	1032.000.007	A = 880 mm	B = 38,5 mm	C = 40,5 mm	24 W	2814 lm	849 lx @ 1m
PS MultiLED 3257 mit weißer Abdeckung	1032.000.008	A = 1134 mm	B = 38,5 mm	C = 40,5 mm	32 W	3752 lm	1132 lx @ 1m

Variants overview: PS MultiLED IP54 - with diffuse cover and on/off switch

Description:	Item number:	Length:			Power:	Luminous flux:	Illumination:
PS MultiLED 0857 S mit weißer Abdeckung	1032.000.045	A = 372 mm	B = 38,5 mm	C = 40,5 mm	8 W	938 lm	283 lx @ 1m
PS MultiLED 1657 S mit weißer Abdeckung	1032.000.046	A = 626 mm	B = 38,5 mm	C = 40,5 mm	16 W	1876 lm	566 lx @ 1m
PS MultiLED 2457 S mit weißer Abdeckung	1032.000.047	A = 880 mm	B = 38,5 mm	C = 40,5 mm	24 W	2814 lm	849 lx @ 1m
PS MultiLED 3257 S mit weißer Abdeckung	1032.000.048	A = 1134 mm	B = 38,5 mm	C = 40,5 mm	32 W	3752 lm	1132 lx @ 1m

Variants overview: PS MultiLED IP54 - with diffuse cover and through-wiring

Description:	Item number:	Length:			Power:	Luminous flux:	Illumination:
PS MultiLED 0857 DV mit weißer Abdeckung	1032.000.015	A = 371 mm	B = 38,5 mm	C = 40,5 mm	8 W	938 lm	283 lx @ 1m
PS MultiLED 1657 DV mit weißer Abdeckung	1032.000.016	A = 625 mm	B = 38,5 mm	C = 40,5 mm	16 W	1876 lm	566 lx @ 1m
PS MultiLED 2457 DV mit weißer Abdeckung	1032.000.017	A = 879 mm	B = 38,5 mm	C = 40,5 mm	24 W	2814 lm	849 lx @ 1m
PS MultiLED 3257 DV mit weißer Abdeckung	1032.000.018	A = 1133 mm	B = 38,5 mm	C = 40,5 mm	32 W	3752 lm	1132 lx @ 1m

PS MultiLED – RGB Signal luminaire

24 V
DC

IP54

M12

-10°C
...
+40°C

Product features:

- Different lengths
- Long service life of 60,000 hours
- M12 sensor connector for digital control at 24 Volts via a machine or piece of equipment (e.g. using SPS)
- Luminaire housing made of anodised aluminum
- Optionally with RGBW modules

Highlights:

- With transverse and longitudinal grooves for greater flexibility to make attachment easier
- Robust mounting bracket made from stainless steel - no bursting when tightening the screws
- Through-wiring of several lights
(Total current consumption of max. 4 amps)



Variants overview: PS MultiLED RGB – with diffuse cover

Description:	Item number:	Length:			Power:	Luminous flux:
PS MultiLED 04RGB	1032.000.025	A = 207 mm	B = 38,5 mm	C = 40,5 mm	4 W	118 lm 33 lm 79 lm 13 lm (RGB)
PS MultiLED 08RGB	1032.000.021	A = 372 mm	B = 38,5 mm	C = 40,5 mm	8 W	237 lm 66 lm 157 lm 26 lm (RGB)
PS MultiLED 16RGB	1032.000.022	A = 626 mm	B = 38,5 mm	C = 40,5 mm	16 W	474 lm 132 lm 314 lm 52 lm (RGB)
PS MultiLED 24RGB	1032.000.023	A = 880 mm	B = 38,5 mm	C = 40,5 mm	24 W	711 lm 198 lm 472 lm 78 lm (RGB)

Variants overview: PS MultiLED RGB – with through-wiring

Description:	Item number:	Length:			Power:	Luminous flux:+
PS MultiLED 04RGB DV	1032.000.035	A = 213 mm	B = 38,5 mm	C = 40,5 mm	4 W	118 lm 33 lm 79 lm 13 lm (RGB)
PS MultiLED 08RGB DV	1032.000.031	A = 371 mm	B = 38,5 mm	C = 40,5 mm	8 W	237 lm 66 lm 157 lm 26 lm (RGB)
PS MultiLED 16RGB DV	1032.000.032	A = 625 mm	B = 38,5 mm	C = 40,5 mm	16 W	474 lm 132 lm 314 lm 52 lm (RGB)
PS MultiLED 24RGB DV	1032.000.033	A = 879 mm	B = 38,5 mm	C = 40,5 mm	24 W	711 lm 198 lm 472 lm 78 lm (RGB)
PS MultiLED 32RGB DV	1032.000.034	A = 1133 mm	B = 38,5 mm	C = 40,5 mm	32 W	945 lm 264 lm 629 lm 103 lm (RGB)

PS MultiLED - IP20

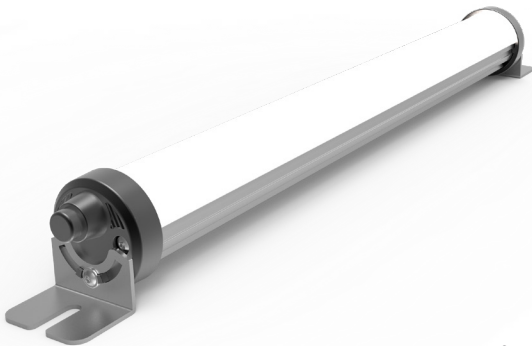
230 V
AC

IP20

4m

-10°C
...
+40°C

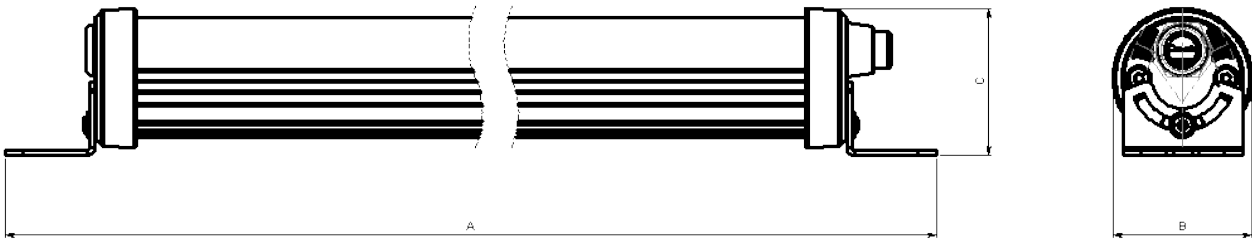
Product features:



- Different lengths
- With LEDs in cold white (5,700 K) or neutral white 4,000 K) light color
- Variants with open cable ends on request
- Long service life of 100,000 hours
- High voltage LED technology*
- Connecting cable 4 m (earthed socket)

Highlights:

- With transverse and longitudinal grooves for greater flexibility to make attachment easier
- Robust mounting bracket made from stainless steel - no bursting when tightening the screws
- Rotatable luminaire to direct the light



Variants overview: PS MultiLED IP20- with diffuse cover 5700 K

Description:	Item number:	Length:			Power:	Luminous flux:	Illumination:
PS MultiLED 0857 AC mit Schalter	1032.000.073	A = 372 mm	B = 38,5 mm	C = 40,5 mm	8 W	748 lm	226 lx @ 1 m
PS MultiLED 1657 AC mit Schalter	1032.000.074	A = 625 mm	B = 38,5 mm	C = 40,5 mm	16 W	1496 lm	452 lx @ 1m
PS MultiLED 2457 AC mit Schalter	1032.000.077	A = 880 mm	B = 38,5 mm	C = 40,5 mm	24 W	2244 lm	678 lx @ 1m
PS MultiLED 3257 AC mit Schalter	1032.000.078	A = 1134 mm	B = 38,5 mm	C = 40,5 mm	32 W	2991 lm	904 lx @ 1m

Variants overview: PS MultiLED IP20- with diffuse cover 4000 K

Description:	Item number:	Length:			Power:	Luminous flux:	Illumination:
PS MultiLED 0840 AC mit Schalter	1032.000.085	A = 372 mm	B = 38,5 mm	C = 40,5 mm	8 W	748 lm	226 lx @ 1 m
PS MultiLED 1640 AC mit Schalter	1032.000.086	A = 625 mm	B = 38,5 mm	C = 40,5 mm	16 W	1496 lm	452 lx @ 1m
PS MultiLED 2440 AC mit Schalter	1032.000.080	A = 880 mm	B = 38,5 mm	C = 40,5 mm	24 W	2244 lm	678 lx @ 1m
PS MultiLED 3240 AC mit Schalter	1032.000.081	A = 1134 mm	B = 38,5 mm	C = 40,5 mm	32 W	2991 lm	904 lx @ 1m

*Please note: These luminaires should not be used in rooms with rotating equipment, since the light modulation could cause stroboscopic effects. The light modulation can have an impact on the perception of moving or rotating instruments. Therefore, do not use the luminaires on critical applications such as in a turning shop. Furthermore, these luminaires can cause interferences on screens or cameras and on monochrome LCDs.

PS TubeLED

24 V
DC

IP67

M12

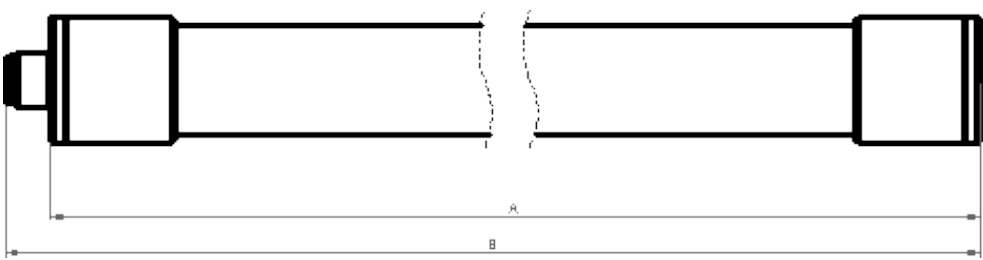
-10°C
...
+50°C

Product features:

- Different lengths
- Long service life of 50.000 hours (L80 | B50)
- M12 sensor connector for digital control at 24 Volts via a machine or piece of equipment (e.g. using SPS)

Highlights:

- High resistance to water, dust, acids, alkalis and organic substances
- Extremely robust
- Various clamps for easy installation



Variants overview: PS TubeLED - with polycarbonate tube

Description:	Item number:	Length:	Diameter:	Power:	Luminous flux:	Color temperature:
PS TubeLED 300	4210.000.001	A = 300 mm	C = 28 mm	7,2 W	945 lm	5600 K
PS TubeLED 570	4210.000.002	A = 570 mm	C = 28 mm	12 W	1450 lm	5600 K
PS TubeLED 1080	4210.000.003	A = 1080 mm	C = 28 mm	24 W	2900 lm	5600 K

Variants overview: PS TubeLED - with borosilicate tube

Description:	Item number:	Length:	Diameter:	Power:	Luminous flux:	Color temperature:
PS TubeLED 330 Pro	4210.000.021	A = 330 mm	C = 28 mm	7,6 W	980 lm	5000 K
PS TubeLED 615 Pro	4210.000.022	A = 615 mm	C = 28 mm	16 W	2040 lm	5000 K



| PS ProtectLED

High-tech with protection against dust and water spray

Stylish design made from metal, plastic and borosilicate glass – packed with the high-performance LED technology of the PS MultiLED.

Provide a perfectly illuminated production environment with the PS ProtectLED. The high resistance to temperature changes, as well as high resistance to water, acids, caustic solutions and organic substances, enables the PS ProtectLED to shine in a wide variety of application areas.

PS ProtectLED – Bright light distributed along the entire tube length and also particularly robust, shock-proof and cut-resistant.

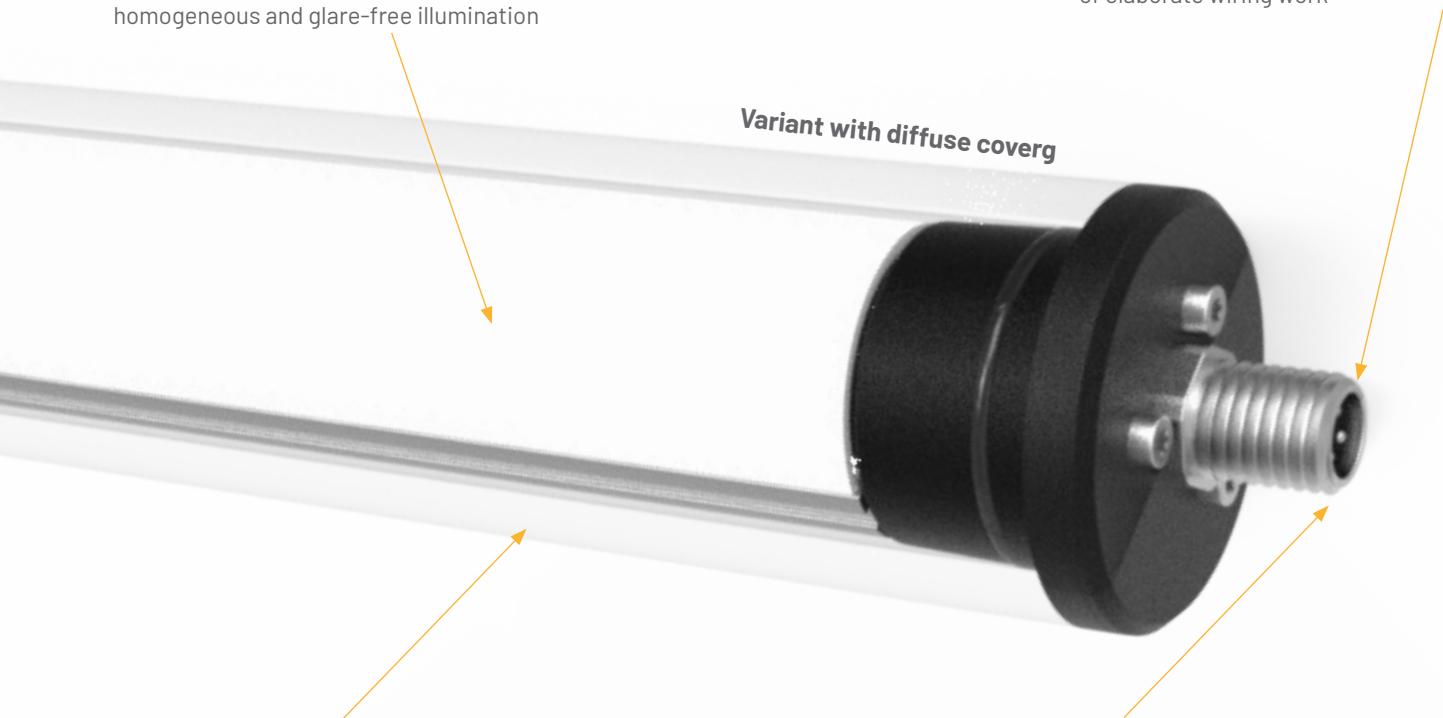
An overview of the PS ProtectLED

Satinierte Abdeckung:

Optional with satin finish cover for one even distribution of light and a homogeneous and glare-free illumination

Optionale Durchgangsverdrahtung:

Switching several lights in series (via M12 socket) and Avoid of elaborate wiring work

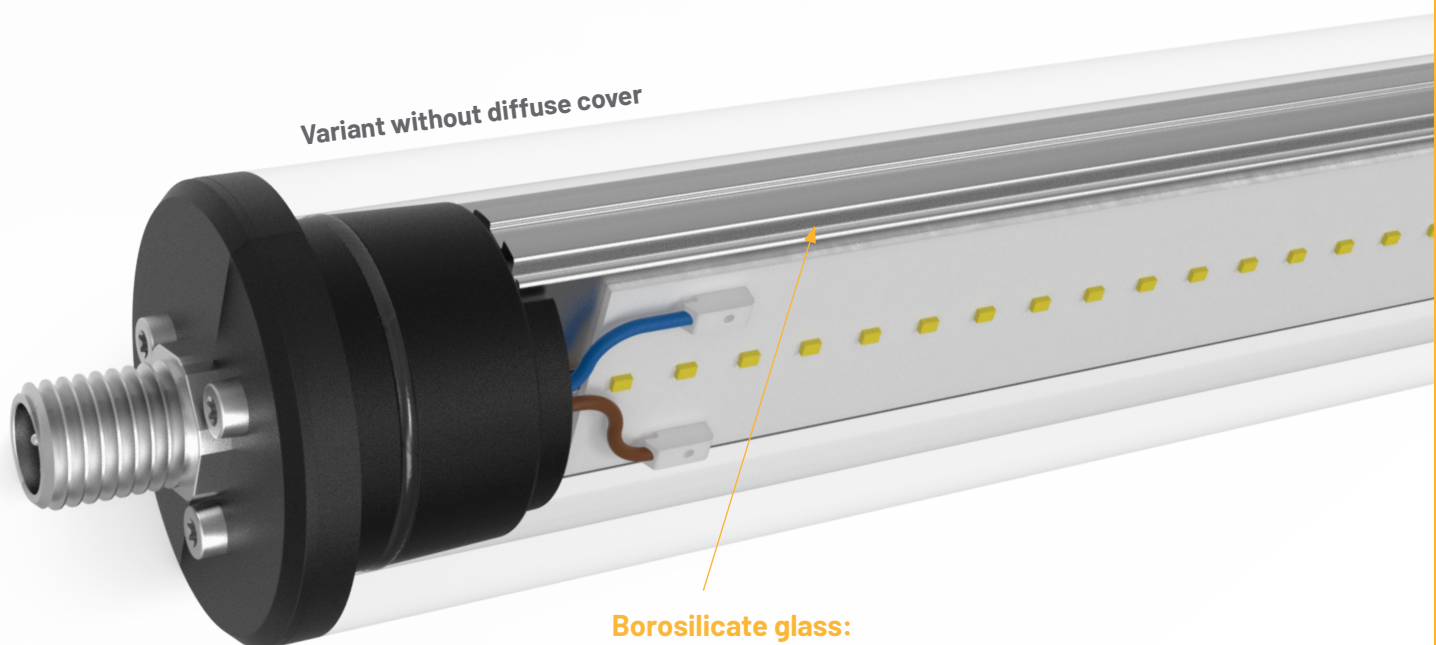


Compact aluminum profile:

For optimal thermal management and a long life

M12 Connector:

For digital control with 24 volts via a machine or plant



Borosilicate glass:

High resistance to water, dust, alkalis and other organic substances

PS ProtectLED - IP67 LED Tube luminaire

24 V
DC

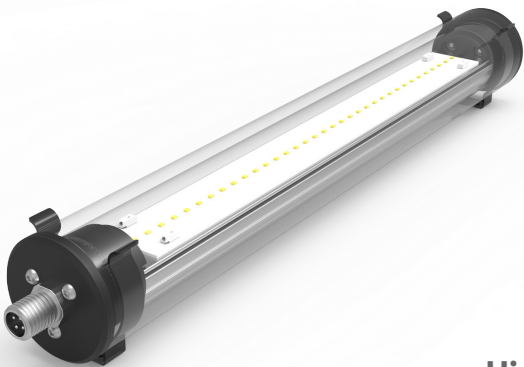


IP67

M12

-10°C
...
+50°C

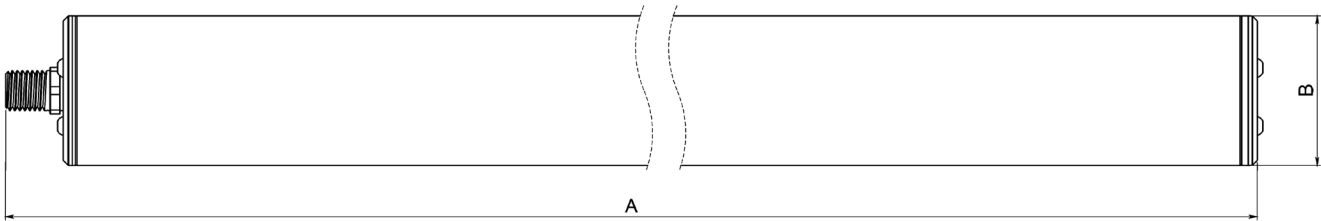
Product features:



- Borosilicate glass tube (thickness = 5mm)
- Different lengths
- With LEDs in cool white (5,700 K) light color and very good color rendering (RA> 80)
- Long service life of 50,000 hours
- M12 sensor connector for digital control at 24 Volts via a machine or piece of equipment (e.g. using SPS)

Highlights:

- High resistance to water, dust, acids, alkalis and organic substances
- Extremely robust
- Various clamps for easy installation
- Through-wiring of several lights



Variants overview: PS ProtectLED IP67

Description:	Item number:	Length:	Diameter:	Power:	Luminous flux:	Illumination:
PS ProtectLED 0657	1035.000.001	A = 345 mm	B = 45 mm	6 W	861 lm	250 lx @ 1 m
PS ProtectLED 1257	1035.000.002	A = 600 mm	B = 45 mm	12 W	1722 lm	500 lx @ 1 m
PS ProtectLED 1857	1035.000.003	A = 850 mm	B = 45 mm	18 W	2582 lm	750 lx @ 1 m

Variants overview: PS ProtectLED IP67 - with diffuse cover

Description:	Item number:	Length:	Diameter:	Power:	Luminous flux:	Illumination:
PS ProtectLED 0657 WE	1035.000.005	A = 345 mm	B = 45 mm	6 W	654 lm	200 lx @ 1 m
PS ProtectLED 1257 WE	1035.000.006	A = 600 mm	B = 45 mm	12 W	1309 lm	400 lx @ 1 m
PS ProtectLED 1857 WE	1035.000.007	A = 850 mm	B = 45 mm	18 W	1962 lm	600 lx @ 1 m

Variants overview: PS ProtectLED IP67 - with through-wiring

Description:	Item number:	Length:	Diameter:	Power:	Luminous flux:	Illumination:
PS ProtectLED 0657 DV	1035.000.011	A = 360 mm	B = 45 mm	6 W	861 lm	250 lx @ 1 m
PS ProtectLED 1257 DV	1035.000.012	A = 615 mm	B = 45 mm	12 W	1722 lm	500 lx @ 1 m
PS ProtectLED 1857 DV	1035.000.013	A = 865 mm	B = 45 mm	18 W	2582 lm	750 lx @ 1 m

Variants overview: PS ProtectLED IP67 - with through-wiring and diffuse cover

Description:	Item number:	Length:	Diameter:	Power:	Luminous flux:	Illumination:
PS ProtectLED 0657 DV WE	1035.000.015	A = 360 mm	B = 45 mm	6 W	654 lm	200 lx @ 1 m
PS ProtectLED 1257 DV WE	1035.000.016	A = 615 mm	B = 45 mm	12 W	1309 lm	400 lx @ 1 m
PS ProtectLED 1857 DV WE	1035.000.017	A = 865 mm	B = 45 mm	18 W	1962 lm	600 lx @ 1 m

PS ProtectLED – RGB / RGBW Signal luminaire

24 V
DC



IP67

M12

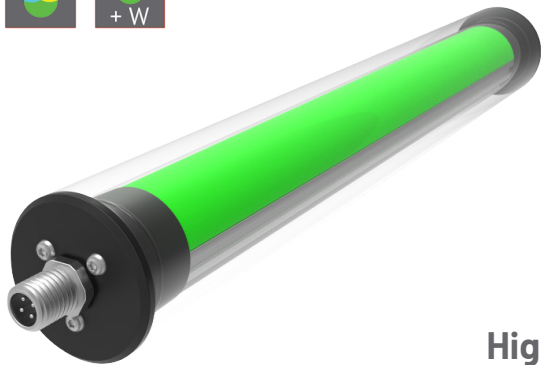
-10°C
...
+50°C





+ W

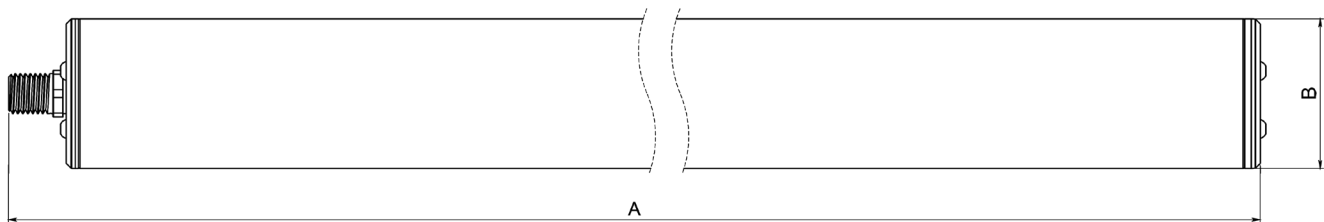
Product features:



- Standard variant with RGB LEDs
- RGBW variant with combined LEDs
- Borosilicate glass tube (thickness = 5mm)
- Different lengths
- Long service life of 50,000 hours
- M12 sensor connector for digital control at 24 Volts via a machine or piece of equipment (e.g. using SPS)

Highlights:

- High resistance to water, dust, acids, alkalis and organic substances
- Display of different machine states by different colors
- Various clamps for easy installation
- Through-wiring of several lights



Variants overview: PS ProtectLED RGB – with diffuse cover

Description:	Item number:	Length:	Diameter:	Power:	Luminous flux:
PS ProtectLED 06RGB	1035.000.021	A = 345 mm	B = 45 mm	6 W	140 lm
PS ProtectLED 12RGB	1035.000.022	A = 600 mm	B = 45 mm	12 W	280 lm
PS ProtectLED 18RGB	1035.000.023	A = 850 mm	B = 45 mm	18 W	420 lm

Variants overview: PS ProtectLED RGB – with diffuse cover and through-wiring

Description:	Item number:	Length:	Diameter:	Power:	Luminous flux:
PS ProtectLED 06RGB DV	1035.000.031	A = 345 mm	B = 45 mm	6 W	140 lm
PS ProtectLED 12RGB DV	1035.000.032	A = 600 mm	B = 45 mm	12 W	280 lm
PS ProtectLED 18RGB DV	1035.000.033	A = 850 mm	B = 45 mm	18 W	420 lm

Variants overview: PS ProtectLED with RGBW LEDs 3000 K

Description:	Item number:	Length:	Diameter:	Power:	Color temperature:	Luminous flux:
PS ProtectLED 06RGBW30	1035.000.101	A = 345 mm	B = 45 mm	8 W / 8,5 W	RGB / 3000 K	365 lm
PS ProtectLED 12RGBW30	1035.000.102	A = 600 mm	B = 45 mm	16 W / 17 W	RGB / 3000 K	1270 lm
PS ProtectLED 18RGBW30	1035.000.103	A = 850 mm	B = 45 mm	24 W / 25,5 W	RGB / 3000 K	1900 lm

Variants overview: –PS ProtectLED with RGBW LEDs 6500 K

Description:	Item number:	Length:	Diameter:	Power:	Color temperature:	Luminous flux:
PS ProtectLED 06RGBW65	1035.000.111	A = 345 mm	B = 45 mm	8 W / 8,5 W	RGB / 6500 K	365 lm
PS ProtectLED 12RGBW65	1035.000.112	A = 600 mm	B = 45 mm	16 W / 17 W	RGB / 6500 K	1270 lm
PS ProtectLED 18RGBW65	1035.000.113	A = 850 mm	B = 45 mm	24 W / 25,5 W	RGB / 6500 K	1900 lm

UV light - modern technology for the industry

The word UV radiation sounds the alarm bells in most people - the term is often associated with skin cancer or sunburn. But there is one too positive effect - the manifold applications in the industry. Here, for example, UV light is used for hardening of paints, paints, adhesives and silicones.

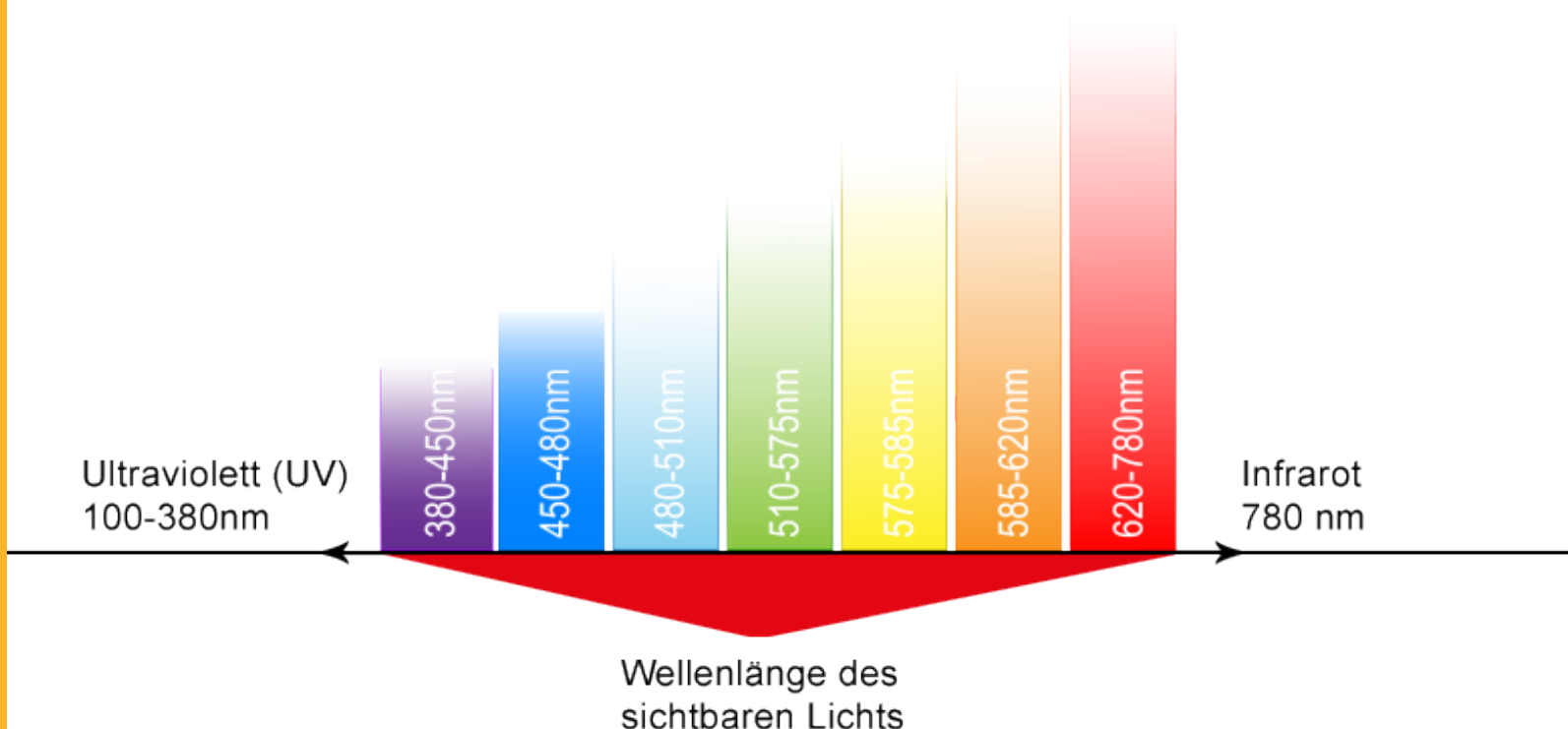
Light is the part of the electromagnetic radiation that we can see with our eyes. The light spectrum (wavelengths of visible light) is between 380 and 780 nanometers.

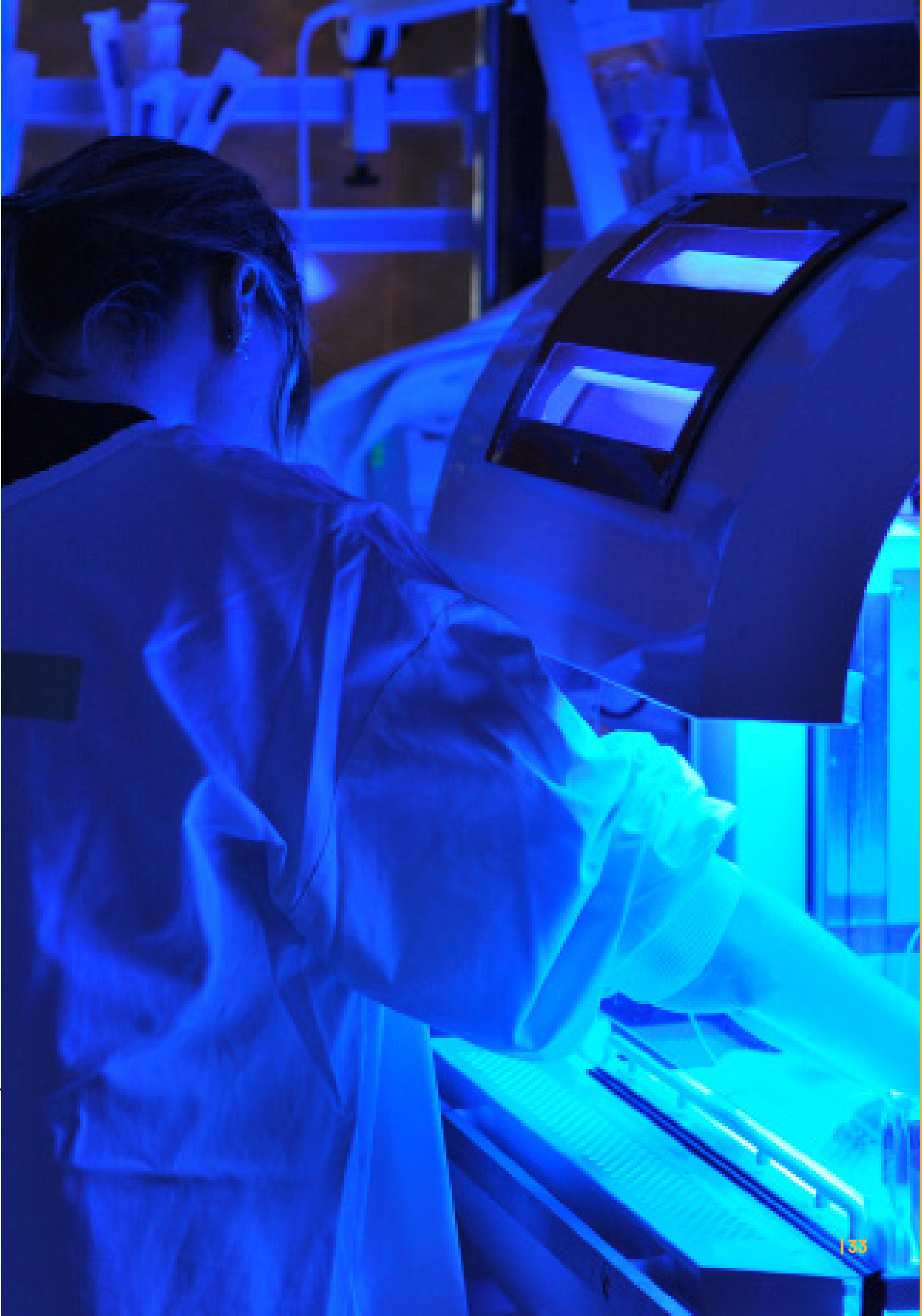
The ultraviolet (UV) radiation, which covers the wavelength range from 100 nanometers (nm) to 400 nm, is the most energetic part of the optical radiation. The UV radiation is not visible to humans and can not with other sensory organs be perceived. Because of their physical and biological properties, the UV radiation is again divided into:

UV-A-Radiation (wavelength 400 - 315 nm)

UV-B-Radiation (wavelength 315 - 280 nm)

UV-C-Radiation (wavelength 280 - 100 nm)





PS UV LED 24 V (DC) M12

24 V
DC

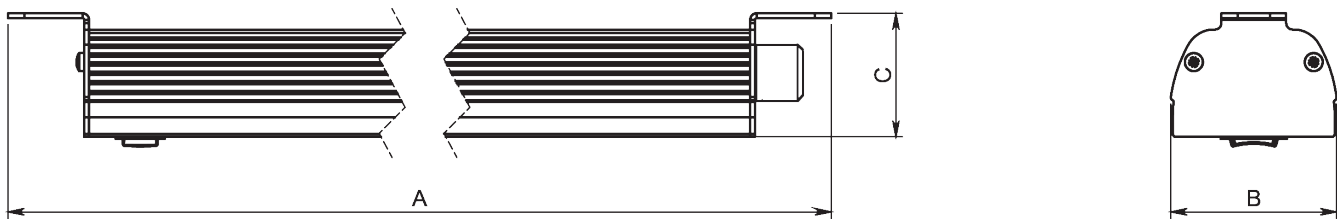
IP30

Product features:

- Ultra-slim and space-saving design
- Cover made of borosilicate (thickness =2,75 mm)
- Different lengths
- M12 sensor plug for control via a machine or system

Highlights:

- Visualization of solvents
- Black light Applications
- Preidity of documents
- Material testing
- Grass or criminological purposes



Variants overview: PS UV LED 24 Volt

Description:	Item number:	Length:	Width:	Height:	Conne- tor:	Wavelength:	Radiant power:
PS UV LED 10 365 M12 (with switch)	1029.000.311	A = 501 mm	B = 51 mm	C = 38 mm	GST15i3	365 nm	6450 mW
PS UV LED 10 385 M12 (with switch)	1029.000.312	A = 501 mm	B = 51 mm	C = 38 mm	GST15i3	385 nm	7200 mW
PS UV LED 10 395 M12 (with switch)	1029.000.313	A = 501 mm	B = 51 mm	C = 38 mm	GST15i3	395 nm	7350 mW
PS UV LED 10 405 M12 (with switch)	1029.000.314	A = 501 mm	B = 51 mm	C = 38 mm	GST15i3	405 nm	7200 mW
PS UV LED 10 365 M12 (without switch)	1029.000.321	A = 501 mm	B = 51 mm	C = 38 mm	GST15i3	365 nm	6450 mW
PS UV LED 10 385 M12 (without switch)	1029.000.322	A = 501 mm	B = 51 mm	C = 38 mm	GST15i3	385 nm	7200 mW
PS UV LED 10 395 M12 (without switch)	1029.000.323	A = 501 mm	B = 51 mm	C = 38 mm	GST15i3	395 nm	7350 mW

Description:	Item number:	Length:	Width:	Height:	Conne- tor:	Wavelength:	Radiant power:
PS UV LED 05 365 M12 (with switch)	1029.000.315	A = 261 mm	B = 51 mm	C = 38 mm	GST15i3	365 nm	2150 mW
PS UV LED 05 385 M12 (with switch)	1029.000.316	A = 261 mm	B = 51 mm	C = 38 mm	GST15i3	385 nm	2400 mW
PS UV LED 05 395 M12 (with switch)	1029.000.317	A = 261 mm	B = 51 mm	C = 38 mm	GST15i3	395 nm	2450 mW
PS UV LED 05 405 M12 (with switch)	1029.000.318	A = 261 mm	B = 51 mm	C = 38 mm	GST15i3	405 nm	2400 mW
PS UV LED 05 365 M12 (without switch)	1029.000.325	A = 261 mm	B = 51 mm	C = 38 mm	GST15i3	365 nm	2150 mW
PS UV LED 05 385 M12 (without switch)	1029.000.326	A = 261 mm	B = 51 mm	C = 38 mm	GST15i3	385 nm	2400 mW
PS UV LED 05 395 M12 (without switch)	1029.000.327	A = 261 mm	B = 51 mm	C = 38 mm	GST15i3	395 nm	2450 mW
PS UV LED 05 405 M12 (without switch)	1029.000.328	A = 261 mm	B = 51 mm	C = 38 mm	GST15i3	405 nm	2400 mW

PS UV LED 230 V (AC) with integrated control gear

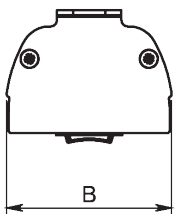
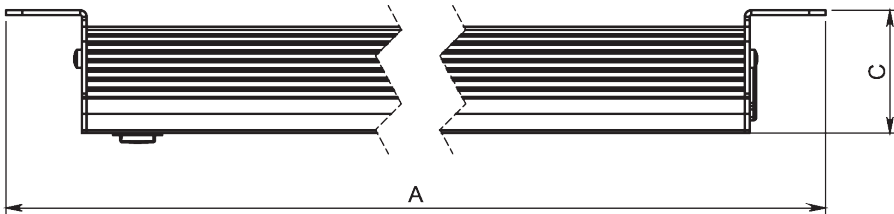


Product features:

- Ultra-slim and space-saving design
- Cover made of borosilicate (thickness =2,75 mm)
- Different lengths
- Direct connection to 230 V (AC) via Wieland GST15i3

Highlights:

- Visualization of solvents
- Black light Applications
- Preidity of documents
- Material testing
- Grass or criminological purposes



Variants overview: PS UV LED 230 Volt

Description:	Item number:	Length:	Width:	Height:	Conne- tor:	Wavelength:	Radiant power:
PS UV LED 10 365 S (with switch)	1029.000.351	A = 501 mm	B = 51 mm	C = 38 mm	GST15i3	365 nm	6450 mW
PS UV LED 10 385 S (with switch)	1029.000.352	A = 501 mm	B = 51 mm	C = 38 mm	GST15i3	385 nm	7200 mW
PS UV LED 10 395 S (with switch)	1029.000.353	A = 501 mm	B = 51 mm	C = 38 mm	GST15i3	395 nm	7350 mW
PS UV LED 10 405 S (with switch)	1029.000.354	A = 501 mm	B = 51 mm	C = 38 mm	GST15i3	405 nm	7200 mW
PS UV LED 10 365 (without switch)	1029.000.361	A = 501 mm	B = 51 mm	C = 38 mm	GST15i3	365 nm	6450 mW
PS UV LED 10 385 (without switch)	1029.000.362	A = 501 mm	B = 51 mm	C = 38 mm	GST15i3	385 nm	7200 mW
PS UV LED 10 395 (without switch)	1029.000.363	A = 501 mm	B = 51 mm	C = 38 mm	GST15i3	395 nm	7350 mW
PS UV LED 10 405 (without switch)	1029.000.364	A = 501 mm	B = 51 mm	C = 38 mm	GST15i3	405 nm	7200 mW

No matching product found? Are you looking for a special solution?

Wherever our standard products are not used we develop innovative and customized Special solutions with the competence of a specialist in the field the LED technology.

Planning lighting concepts for your company, developing and manufacturing LED technology for special requirements or mounting your products: As a reliable partner for LED special solutions, we support you with our services. Benefit from our experience and top-level know-how in the field of LED technology.

All services for your special LED solution from a single source

Pfeifer and Seibel sees itself as a reliable EMS service provider and offers you a comprehensive realization of your project. Whether it's about the optimization of standard products, mass production, the implementation of a prototype or the development of completely new lighting concepts, with PS lights you get all the services from a single source. In this way, you will receive customized lighting solutions tailored to your requirements for your lighting project.

Electronic manufacturing services in the area of special LED solutions

As a company, we have more than 60 years of experience in lighting systems and top-level know-how in all aspects of state-of-the-art LED lighting technology. With these services we support you:

With our EMS services, we cover all steps from planning through production to the complete assembly of your products. In this way, you receive all services from a single source. We are happy to realize special customer requests and implement your special requests. It does not matter whether you want to have a product completely redeveloped or have an existing product modified to meet your requirements.

With these services we support you:

1. Lighting Design

Showcasing business and office space, optimally presenting products, creating a productive work environment for your employees – and succeeding with the right lighting. However, this requires comprehensive and targeted lighting planning. Together with you and your team, our experts plan the perfect lighting for your project.

2. Electronics development

Special lighting solutions require individual electronic assemblies. Have your components such as DC and AC LED modules, LED drivers or lighting controls developed by our experts especially for your needs. We also provide services such as software development for microcontrollers or handling national and international certification of products. .

3. Printed Circuit Board assembly

As an electronic manufacturing service provider, we manufacture electronic components for LED lighting systems according to your specifications for your products. We are happy to fit partially or fully automated PCBs in various sizes for you. Rely on the highest quality thanks to state-of-the-art production equipment.

4. Assembly

Have your LED lights fitted by our specialist staff according to your specifications and wishes. Modern production lines and optimized production processes enable high flexibility and delivery reliability right up to just-in-time delivery.

Equipment



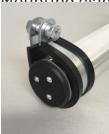
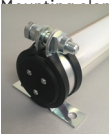
Connecting cables PS ProtectLED and PS MultiLED

Description:	Item number:	Length:
M12 Connecting cable for PS ProtectLED/ PS MultiLED / PS TubeLED , cable length: 2,0m; Coupling 4-pole with open cable ends	1032.014.001	2 m
M12 Connecting cable for PS ProtectLED/ PS MultiLED / PS TubeLED , cable length: 5,0m; Coupling 4-pole with open cable ends	1032.014.002	5 m
M12 Connecting cable for PS ProtectLED/ PS MultiLED / PS TubeLED , cable length: 10,0m; Coupling 4-pole with open cable ends	1032.014.003	10 m
M12 Connecting cable for PS ProtectLED/ PS MultiLED / PS TubeLED , cable length: 2,0m; Coupling 4-pole with open cable ends	1032.014.004	2 m
M12 Connecting cable for PS ProtectLED/ PS MultiLED / PS TubeLED ; cable length 5,0m; Coupling 4-pole with open cable ends	1032.014.005	5 m

Connecting cables PS WorkLED SE

Description:	Item number:	Length:
Connecting cable with Wieland connector for PS WorkLED SE fixed, Variant with Through wiring and Variant with ESD protection	1029.014.001	4 m
Connecting cable with Wieland connectors for PS WorkLED SE with Through wiring	1029.014.002	1 m

Moounting clamps PS ProtectLED

Description:	Item number:
<div>Mounting clamp type 1: Polyamide clamp with click attachment; not suitable for vertical mounting; (Set consisting of 2 pcs.)</div> <div></div>	1035.027.001
<div>Mounting clamp type 2: Spring steel clamp with soft PVC (black); not suitable for vertical mounting; (Set consisting of 2 pcs.)</div> <div></div>	1035.027.002
<div>Mounting clamp type 3: Tube clamp with rubber profile (black); suitable for vertical mounting; (Set consisting of 2 pcs.)</div> <div></div>	1035.027.003
<div>Mounting clamp type 4: Retaining clip (two-part) with rubber profile; suitable for vertical mounting; (Set consisting of 2 pcs.)</div> <div></div>	1035.027.004





INDUSTRY

Pfeifer und Seibel GmbH
Maurerstraße 15
35236 Breidenbach

Fon: +49 (0) 6465 / 9271 - 0
Fax: +49 (0) 6465 / 9271 - 500
Mail: info@ps-leuchten.de

www.ps-leuchten.de/en